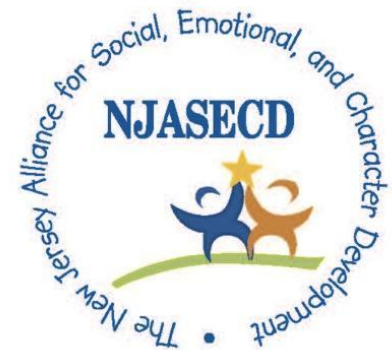


THE SECD 2.0 APPROACH - SEL SKILLS NEED CHARACTER AS A MORAL COMPASS

2025 SEL Day International Summit
Monday, March 3 at 9:10 AM



Welcome and Overview

- **Presenters:**

- Dr. Maurice Elias, Professor of Psychology, Rutgers University, Rutgers SECD Lab, SEL4US and SEL4NJ
- Dr. Nathan Fisher, Superintendent of Schools, Roselle, NJ and NJASECD Trustee
- Dr. William Trusheim, President NJASECD and Secretary, SEL4NJ

- **Goals for today...**

- Discuss the importance of connecting SEL and Character Ed, i.e. SEL 2.0 or “SECD”
- Explore real-world examples from a school district that excels at both SEL and Character Ed.
- Respond to your thoughts and questions!

Let's get started...

- Think about this picture...



Let's get started...

And this quote...

- “Have you ever been at sea in a dense fog, when it seemed as if a tangible white darkness shut you in and the great ship, tense and anxious, groped her way toward the shore with plummet and sounding-line, and you waited with beating heart for something to happen? I was like that ship before my education began, only I was without compass or sounding line, and no way of knowing how near the harbor was. “Light! Give me light!” was the wordless cry of my soul, and the light of love shone on me in that very hour.” - Helen Keller

Let's get started...

Helen Keller talks about finding a way out of that “dense fog.” It is the leader’s job to navigate a way through that fog. The primary job of the school/district leader is ensuring that educational opportunities are there for everyone in the school/district. Additionally, the effective leader needs to be committed to infusing SEL/SECD in all aspects of the school including core academic instruction.

Let's consider the connection between those two approaches – SEL and Character Education – what we call “SEL 2.0” or “SEL/SECD.”

What is Social-Emotional and Character Development (SECD)?

“SEL makes YOUR valued outcomes happen.”

Positive Purpose



Skills

School Climate

Virtues

SECD

The integration of Social-Emotional Learning, Character Development, Culturally Responsive Education and School Culture and Climate: The Four Building Blocks/Foundation of sustainable structures, practices, rituals and routines.

Social Emotional Learning – The Basics

- Social Emotional Learning is most closely associated with the Collaborative for Academic and Social Emotional Learning (CASEL).
- CASEL identifies five domains of these life skills which are important to human development regardless of age. It is important to realize that these skills can be developed and an intentional approach in school settings helps students learn Self-Awareness, Self-Management, Social Awareness, Relationship Skills, and Critical Thinking and Responsible Decision-Making...

Social Emotional Learning – The Basics

SEL Competencies

Self Awareness

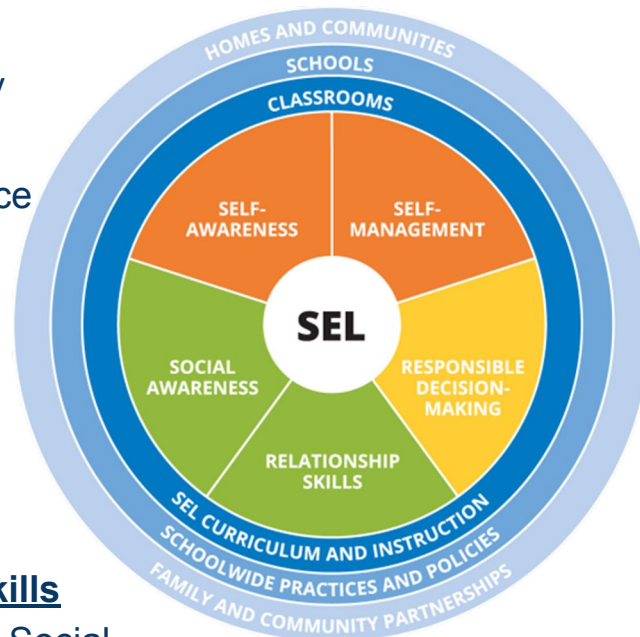
Identifying emotions
Self-perception/Identity
Recognizing strengths
Sense of self-confidence

Social Awareness

Perspective-taking
Empathy
Appreciating diversity
Respect for others

Relationship Skills

Communication Social
engagement Building
relationships Working
cooperatively Resolving
conflicts
Helping/Seeking help



www.casel.org

Self Management

Impulse control
Stress management
Self-discipline
Self-motivation
Perseverance
Goal-setting
Organizational skills

Responsible Decision Making

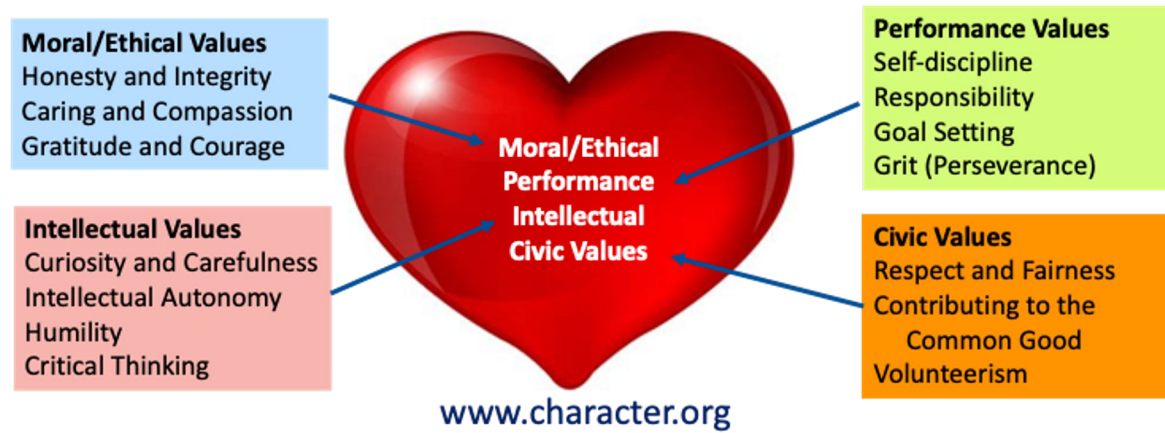
Identifying problems
•Analyzing situations
•Solving problems
•Evaluating
•Reflecting
•Ethical responsibility

Character Education – The Basics

Character Strengths/Core Values

Character Strengths/Core Values are at the heart of the Character Education movement which also embraces both SEL skills and aspects of a positive school culture and climate.

While there are many lists of core values, Character.org, the national authority in this field, identifies four types of values: **Ethical Values**, **Performance Values**, **Intellectual Values**, and **Civic Values**. The examples listed are primary values, but this list is far from exhaustive. There are many more that can be considered in each category.

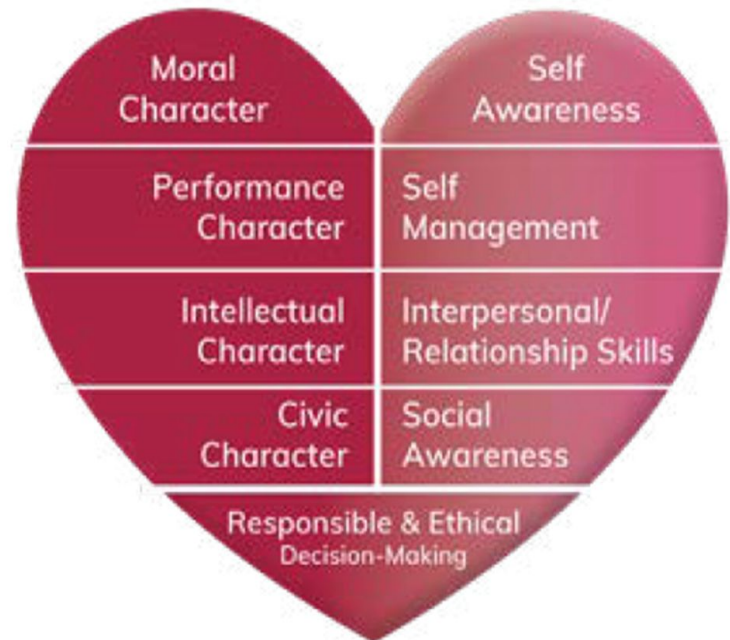


The Nexus between SEL and CE...

Character and Social Emotional Learning

The diagram on the right shows that SEL and Character converge with an alignment of SEL competencies and core values.

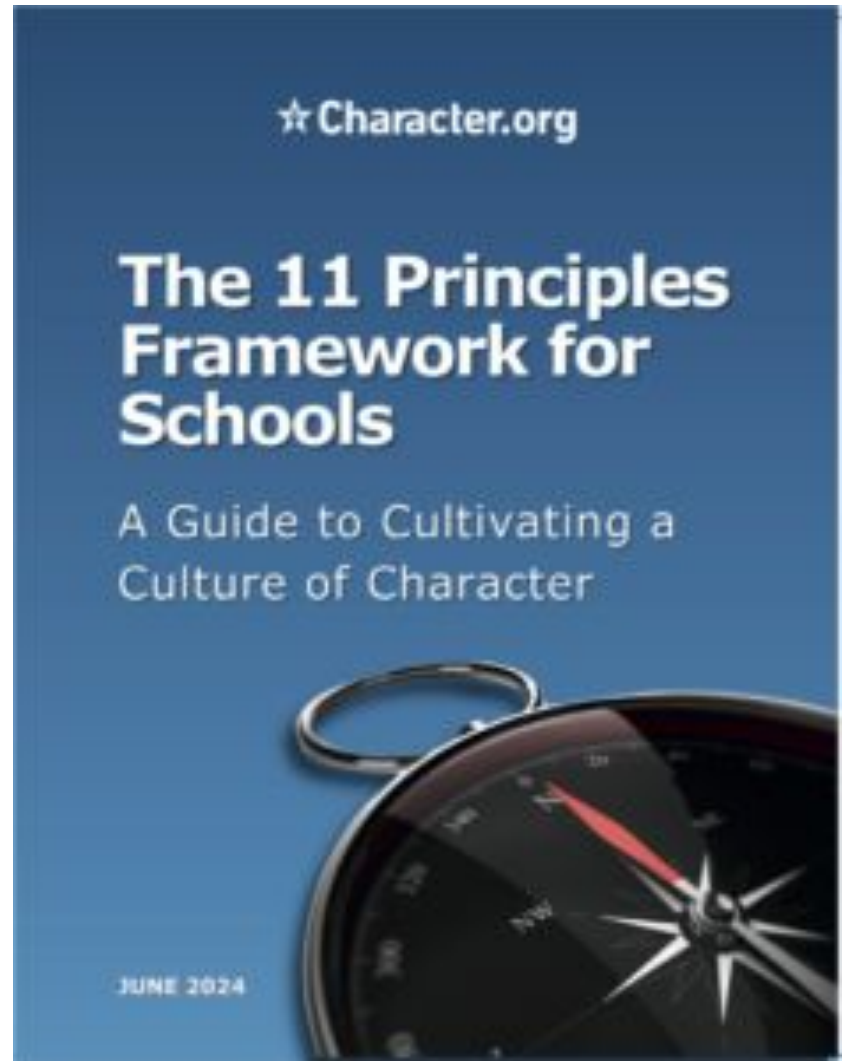
This model was developed by Arthur Schwartz, President of Character.org.



An Implementation Example...

One way that schools can implement SECD is to use a framework or a roadmap to guide their improvement efforts.

Character.org provides such a framework in their “11 Principles” which guides schools through a set of “principles” which contain criteria and indicators around specific aspects of how the school operates. Examples are the selection of core values, creating a caring environment, providing opportunities for service, intrinsic motivation, and faculty, staff, student, parent, and community engagement.



The 11 Principles Framework

Principle 1 – Core Values

Principle 2 – Comprehensive Approach to Character

Principle 3 – Head, Heart, and Hands

Principle 4 – Caring environment

Principle 5 – Moral actions (Service)

Principle 6 – Challenging

Academics for ALL

Principle 7 – Intrinsic Motivation

Principle 8 – Shared Leadership

Principle 9 – Staff

Empowerment

Principle 10 – Parent and

Community Involvement

Principle 11 – Assess and Adjust

Schools of Character

When schools use the 11 Principles to make improvements, they can choose to apply for certification through the Schools of Character program.

This consists of a rigorous review of the school's progress by a team of scorers at the state level followed by a site visit by national evaluators. This is a continuous improvement process that helps schools on their SECD journey.

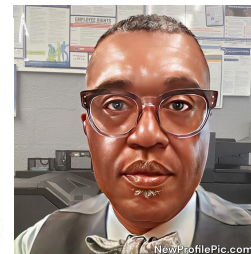
All schools, both public, private, and charter can engage in this work.





ROSELLE PUBLIC SCHOOLS

FIRST IN LIGHT FIRST IN EDUCATION





SEL Competencies: SEL interventions address five core competencies:

- ★ Self-awareness
- ★ Self-management
- ★ Social awareness
- ★ Relationship skills
- ★ Responsible decision-making

SEL Benefits: SEL improves academic performance, manages stress, and improves attitudes. For every dollar spent on SEL, there is an \$11 return on investment.

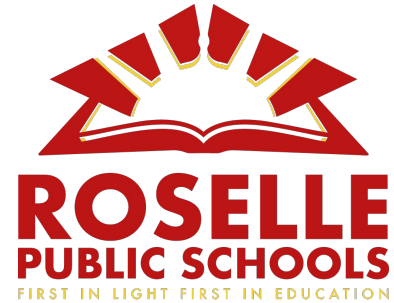
RPS Initiatives: Provide access to evidence-based social-emotional learning instruction and supports throughout core academic subjects.

- Offer culturally-responsive, trauma-informed SEL experiences.
- Engage parents and families in students' social-emotional learning.
- Provide training for mental health professionals, educators, and school support staff.
- Offer tiered levels of support for students.

SEL-ebration: Roselle Public Schools will SEL-ebrate SELDAY2025 across the entire school district on March 14.

- ★ The School Counseling Department has and continues to infusing Social Emotional Learning and Culturally Responsive Teaching





RPS Building Strong Character for Lifelong Success

Key Focus Points:

- **Character Education Vision:** Roselle Public Schools emphasizes character development as a foundation for personal and academic growth at all grade levels Prek-12
- **Core Values:** Respect, Responsibility, Kindness, Integrity, and Perseverance.
- **Programs & Initiatives:**
 - Monthly character trait themes reinforced through classroom discussions and school-wide activities.
 - Peer mentoring programs fostering leadership and positive role modeling.
 - Community service projects encouraging civic responsibility and empathy.
- **Impact on School Culture:** Strengthened scholars relationships, a positive and inclusive environment, and a culture of respect and responsibility.





Fostering Social-Emotional Growth in Our Scholars

Key Focus Points:

- **Commitment to SEL:** Roselle Public Schools integrates Social-Emotional Learning into daily instruction to support scholars well-being and academic success.
- **Core Competencies:** Self-awareness, self-management, social awareness, relationship skills, and responsible decision-making.
- **Programs & Initiatives:**
 - Implementation of CASEL-aligned SEL curriculum.
 - Daily morning meetings and advisory sessions to build emotional resilience.
 - Mindfulness and emotional regulation strategies integrated into classrooms.
- **Impact on Students:** Increased scholars engagement, improved behavior, and enhanced school climate.



We ROSE ARE
ROSELLE

Find out more...

SCHOOLS OF CHARACTER PROCESS

- Contact [Character.org](https://www.character.org)!
- Check with your state affiliate. These states currently have affiliates...
 - Alabama, Colorado, Georgia, Illinois, Indiana, Iowa, Kansas, Kentucky, Michigan, Minnesota, Missouri, Ohio, New Jersey, New York, North Carolina, Oklahoma, Pennsylvania, Texas, Washington, and Wisconsin.
- If you are interested in adding your state to this list, you can contact [Character.org](https://www.character.org)!

Contact information...

- Dr. Maurice Elias – Rutgers University –
melias@psych.rutgers.edu
- Dr. Nathan Fisher – Roselle Public Schools –
nfisher@roselleschools.org
- Dr. William Trusheim – NJASECD –
william.trusheim@gmail.com
- SEL4NJ: website: sel4nj.org
eMail: info@sel4nj.org
- NJASECD: website: njasecd.org
eMail: njasecd@gmail.com